



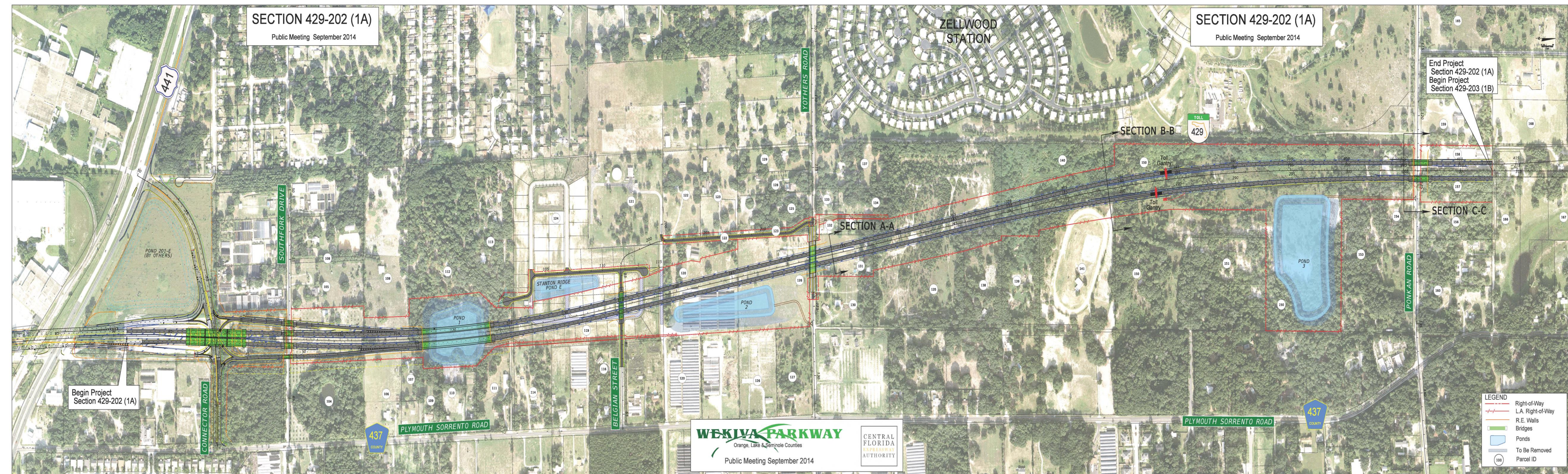
WEKIWA PARKWAY
Completing Central Florida's Beltway
A Regional Transportation Solution



**SECTION 1A
CONSTRUCTION UPDATE
JULY 2015**

**CENTRAL
FLORIDA
EXPRESSWAY
AUTHORITY**

Section 1A



Construction Started: June 8, 2015

Completion: Spring 2017

Section 1A

Clearing north of the SR
429/414 Connector Road near
US 441



Section 1A



Section 1A

Crews carefully excavate and relocate gopher tortoises, a protected keystone species. As of June 30, 2015, 133 have been relocated.



For More Information:

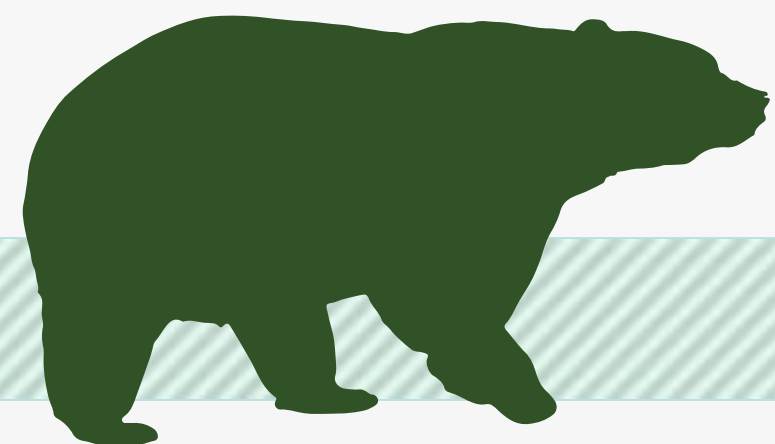
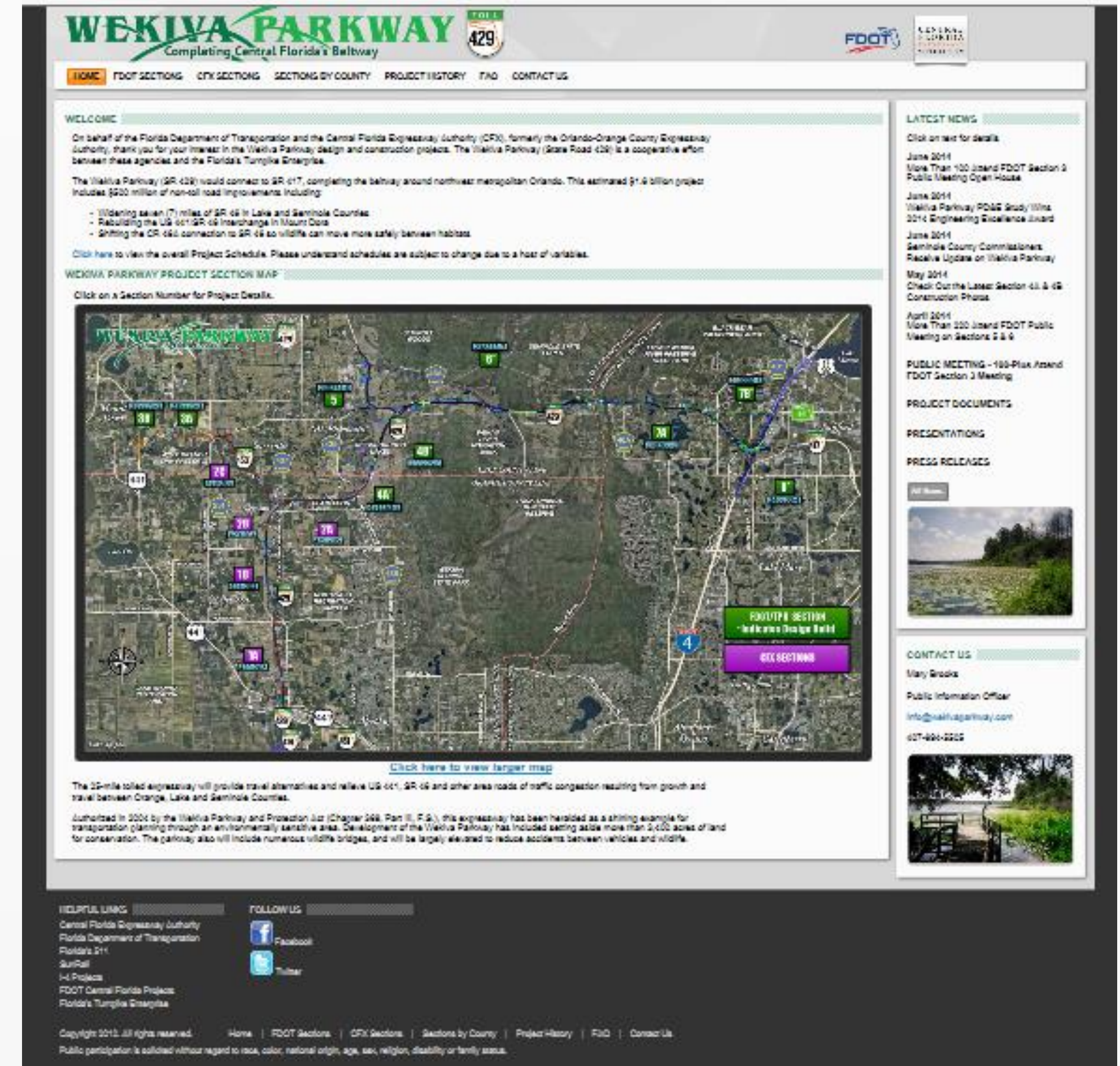
Mary Brooks

Public Involvement Coordinator

C: 407-694-5505

E: Info@wekivaparkway.com

W: www.wekivaparkway.com

The screenshot shows the Wekiva Parkway website with the following content:

- Header:** WEKIVA PARKWAY logo, "Completing Central Florida's Beltway", and a "429" shield logo.
- Navigation:** HOME, FDOT SECTIONS, CITY SECTIONS, SECTIONS BY COUNTY, PROJECT HISTORY, FAQ, CONTACT US.
- WELCOME:**
 - On behalf of the Florida Department of Transportation and the Central Florida Expressway Authority (CFE), formerly the Orlando-Orange County Expressway Authority, thank you for your interest in the Wekiva Parkway design and construction projects. The Wekiva Parkway (State Road 429) is a cooperative effort between these agencies and the Florida's Turnpike Enterprise.
 - The Wekiva Parkway (SR 429) would connect to SR 617, completing the beltway around northeast metropolitan Orlando. This estimated \$1.6 billion project includes \$200 million of non-toll road improvements including:
 - Widening seven (7) miles of SR 46 in Lake and Seminole Counties
 - Rebuilding the US 61/SR 46 interchange in Mount Dora
 - Splitting the SR 46 connection to SR 46 so wildlife can move more safely between habitats
 - [Click here to view the overall Project Schedule.](#) Please understand schedules are subject to change due to a host of variables.
- WEKIVA PARKWAY PROJECT SECTION MAP:**
 - [Click on a Section Number for Project Details.](#)
- Map:** A map of the project area showing various sections (1 through 10) and major roads (SR 46, SR 429, SR 617, SR 408, SR 406, SR 404, SR 402, SR 400, SR 398, SR 396, SR 394, SR 392, SR 390, SR 388, SR 386, SR 384, SR 382, SR 380, SR 378, SR 376, SR 374, SR 372, SR 370, SR 368, SR 366, SR 364, SR 362, SR 360, SR 358, SR 356, SR 354, SR 352, SR 350, SR 348, SR 346, SR 344, SR 342, SR 340, SR 338, SR 336, SR 334, SR 332, SR 330, SR 328, SR 326, SR 324, SR 322, SR 320, SR 318, SR 316, SR 314, SR 312, SR 310, SR 308, SR 306, SR 304, SR 302, SR 300, SR 298, SR 296, SR 294, SR 292, SR 290, SR 288, SR 286, SR 284, SR 282, SR 280, SR 278, SR 276, SR 274, SR 272, SR 270, SR 268, SR 266, SR 264, SR 262, SR 260, SR 258, SR 256, SR 254, SR 252, SR 250, SR 248, SR 246, SR 244, SR 242, SR 240, SR 238, SR 236, SR 234, SR 232, SR 230, SR 228, SR 226, SR 224, SR 222, SR 220, SR 218, SR 216, SR 214, SR 212, SR 210, SR 208, SR 206, SR 204, SR 202, SR 200, SR 198, SR 196, SR 194, SR 192, SR 190, SR 188, SR 186, SR 184, SR 182, SR 180, SR 178, SR 176, SR 174, SR 172, SR 170, SR 168, SR 166, SR 164, SR 162, SR 160, SR 158, SR 156, SR 154, SR 152, SR 150, SR 148, SR 146, SR 144, SR 142, SR 140, SR 138, SR 136, SR 134, SR 132, SR 130, SR 128, SR 126, SR 124, SR 122, SR 120, SR 118, SR 116, SR 114, SR 112, SR 110, SR 108, SR 106, SR 104, SR 102, SR 100, SR 98, SR 96, SR 94, SR 92, SR 90, SR 88, SR 86, SR 84, SR 82, SR 80, SR 78, SR 76, SR 74, SR 72, SR 70, SR 68, SR 66, SR 64, SR 62, SR 60, SR 58, SR 56, SR 54, SR 52, SR 50, SR 48, SR 46, SR 44, SR 42, SR 40, SR 38, SR 36, SR 34, SR 32, SR 30, SR 28, SR 26, SR 24, SR 22, SR 20, SR 18, SR 16, SR 14, SR 12, SR 10, SR 8, SR 6, SR 4, SR 2, SR 0).

- Latest News:**
- Click on news for details
- June 2014: More Than 100 Attend FDOT Section 2 Public Meeting Open House
- June 2014: Wekiva Parkway P&ID Study Wins 2014 Engineering Excellence Award
- June 2014: Seminole County Commissioners Receive Update on Wekiva Parkway
- May 2014: Check Out the Latest Section 43 & 46 Construction Phase
- April 2014: More Than 200 Attend FDOT Public Meeting on Sections 2 & 6
- PUBLIC MEETING - 100-Plus Attend FDOT Section 2 Meeting
- PROJECT DOCUMENTS**
- PRESENTATIONS**
- PRESS RELEASES**
- CONTACT US:**
- Mary Brooks
- Public Information Officer
- Info@wekivaparkway.com
- 407-694-5505
- FOOTER:**
- USEFUL LINKS:** Central Florida Expressway Authority, Florida Department of Transportation, Florida's 211, SunRail, I-4 Projects, FDOT Central Florida Projects, Florida's Turnpike Enterprise
- FOLLOW US:** Facebook, Twitter
- Copyright 2015. All rights reserved. Home | FDOT Sections | City Sections | Sections by County | Project History | FAQ | Contact Us
- Public participation is solicited without regard to race, color, national origin, age, sex, religion, disability or family status.

