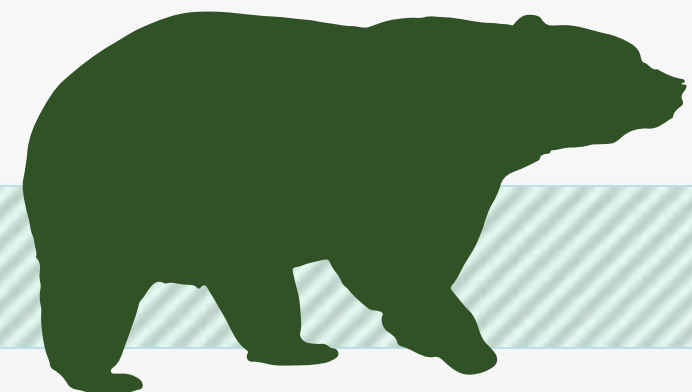




A Regional Transportation Solution

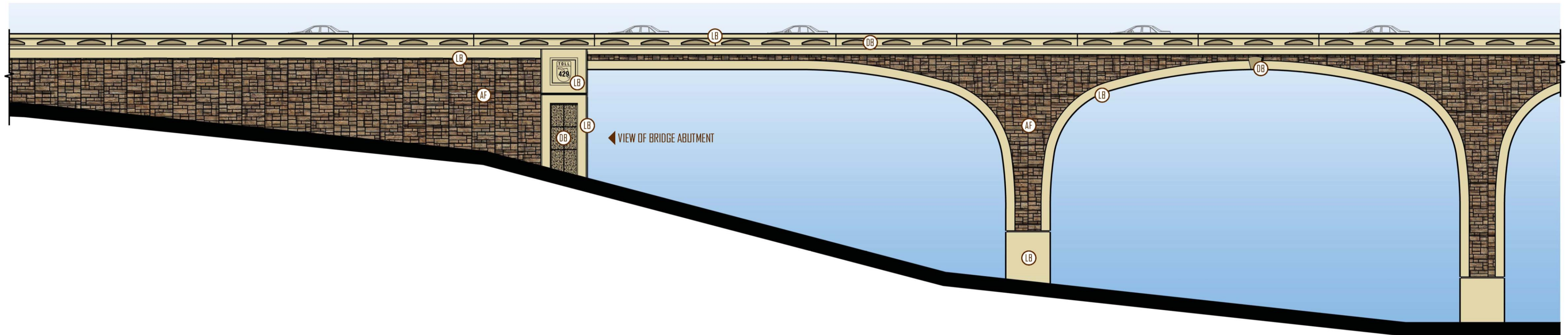
CFX Aesthetics Wall Mockup & Graphics
April 2015



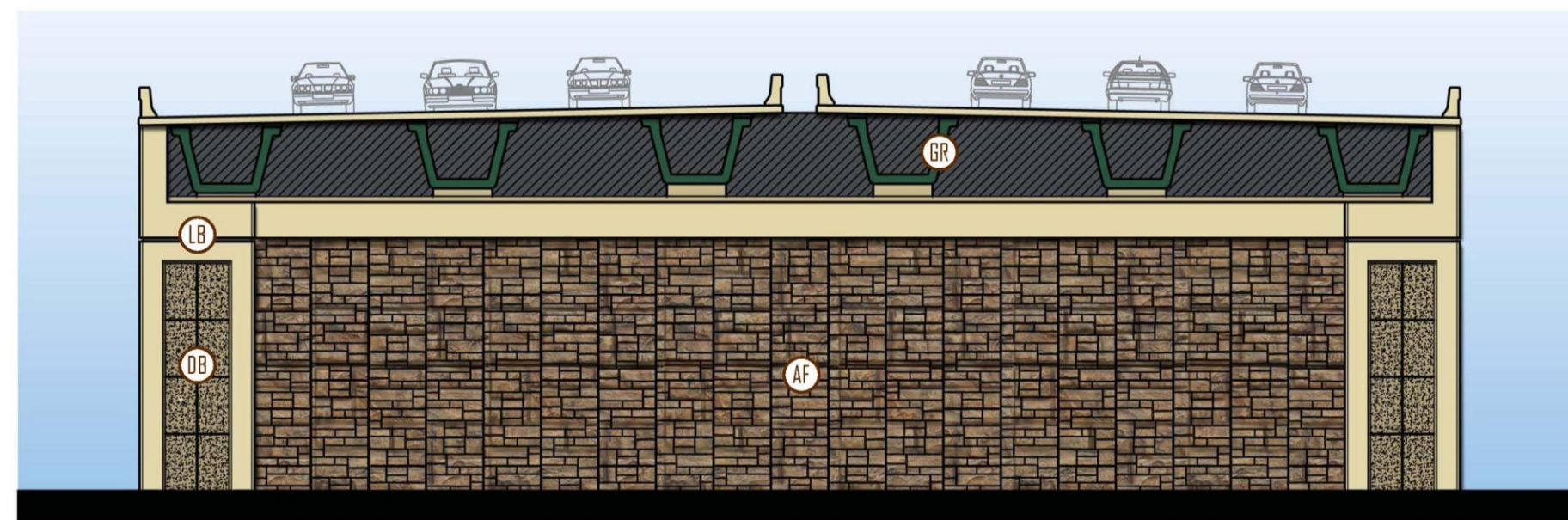




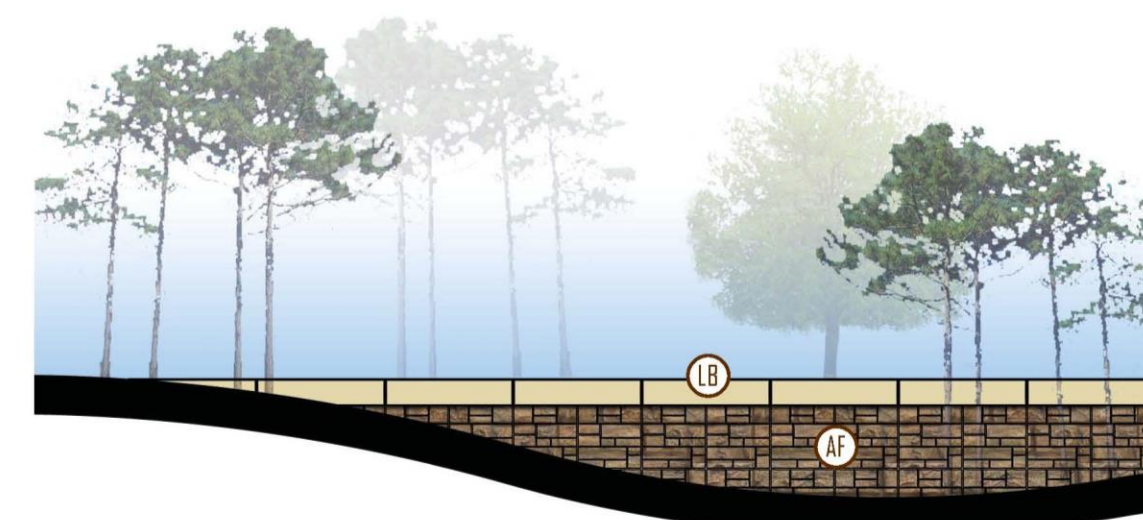
Aesthetics Plans



LOW AREA/LAKE VICTOR - BRIDGE MSE WALL ELEVATION NOT TO SCALE



LOW AREA/LAKE VICTOR
BRIDGE MSE WALL ABUTMENT ELEVATION NOT TO SCALE



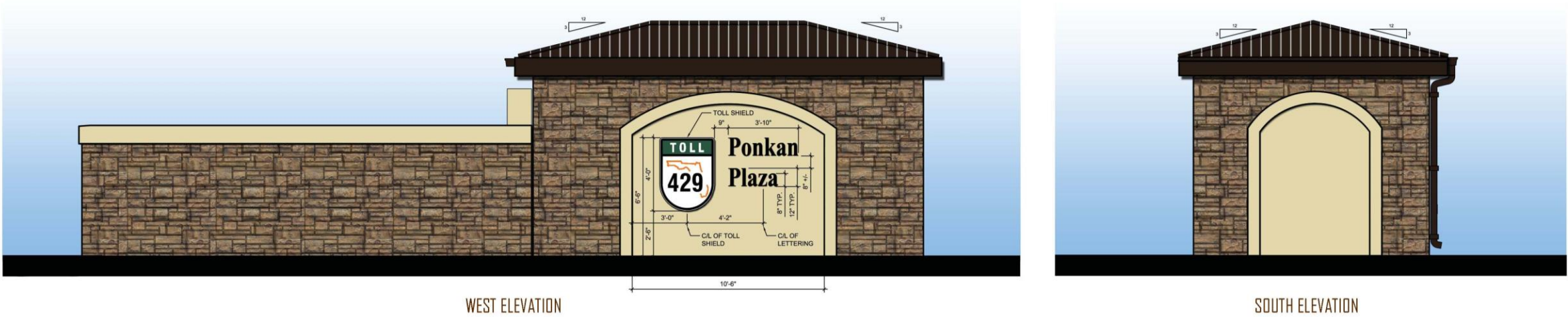
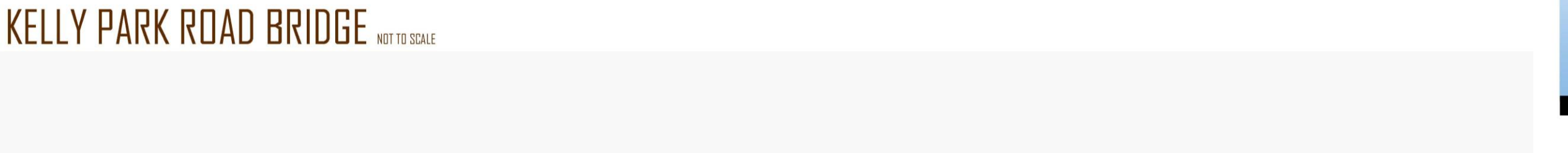
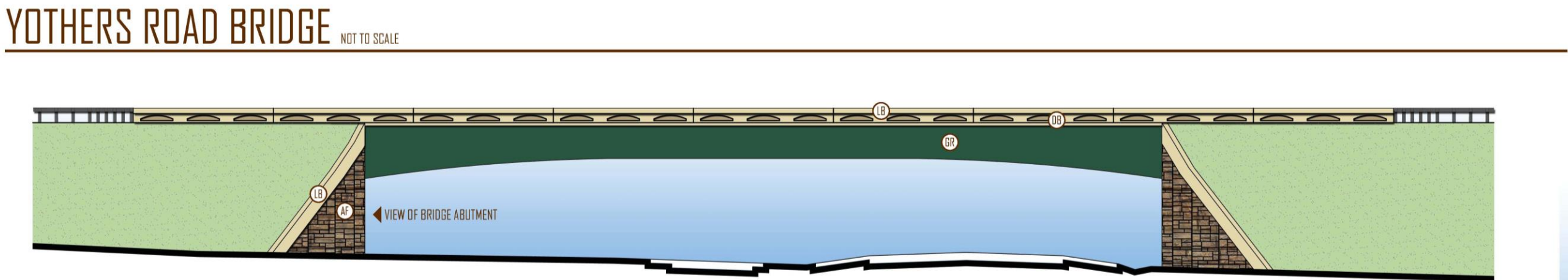
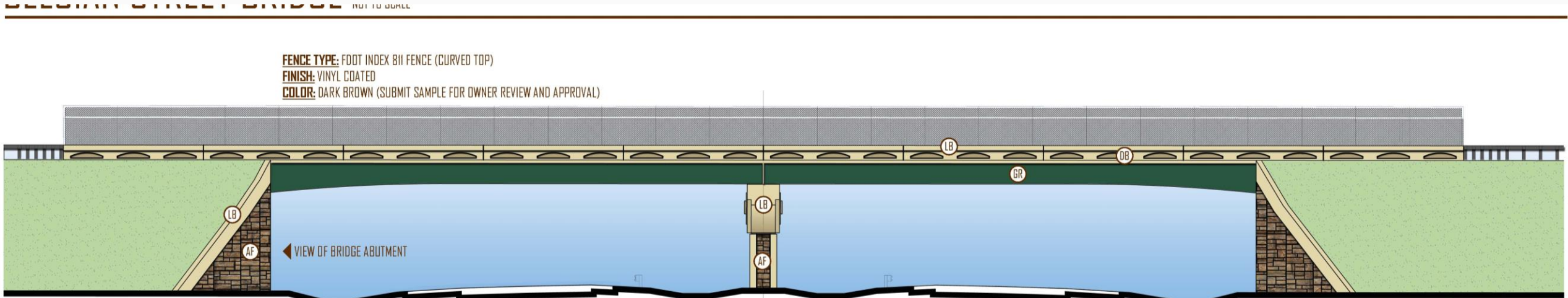
TIERED / LANDSCAPE WALL NOT TO SCALE

LEGEND

- LARGE ASHLAR FORMLINER
 PATTERN: CUSTOMROCK #1501-R2
 MAX. RELIEF = 2"
 BASE COLOR: FED. COLOR #33510
 HIGHLIGHTS: #SW-2195 [50-60%]
 #SW-2124 [10-20%]
 #SW-2070 [WASH COAT]
- LB LIGHT BROWN (FED. COLOR #33690)
 FINISH: SMOOTH / LIGHT SANDBLAST
- DB DARK BROWN (FED. COLOR #33446)
 FINISH: SMOOTH / LIGHT SANDBLAST
- GR DARK GREEN (FED. COLOR #34227)
- BR DARK BRONZE (FED. COLOR #20062)

NOTES: ALL COLORS ARE FEDERAL STANDARD 595B (7/1994) COLORS OR SHERWIN WILLIAMS (SW) COLORS.

Aesthetics Plans



TOLL BUILDING NOT TO SCALE

LEGEND

LARGE ASHLAR FORMLINER
PATTERN: CUSTOMROCK #1501-R2
MAX. RELIEF = 2"
BASE COLOR: FED. COLOR #33510
HIGHLIGHTS: #SW-2195 (50-60%)
#SW-2124 (10-20%)
#SW-2070 (WASH COAT)

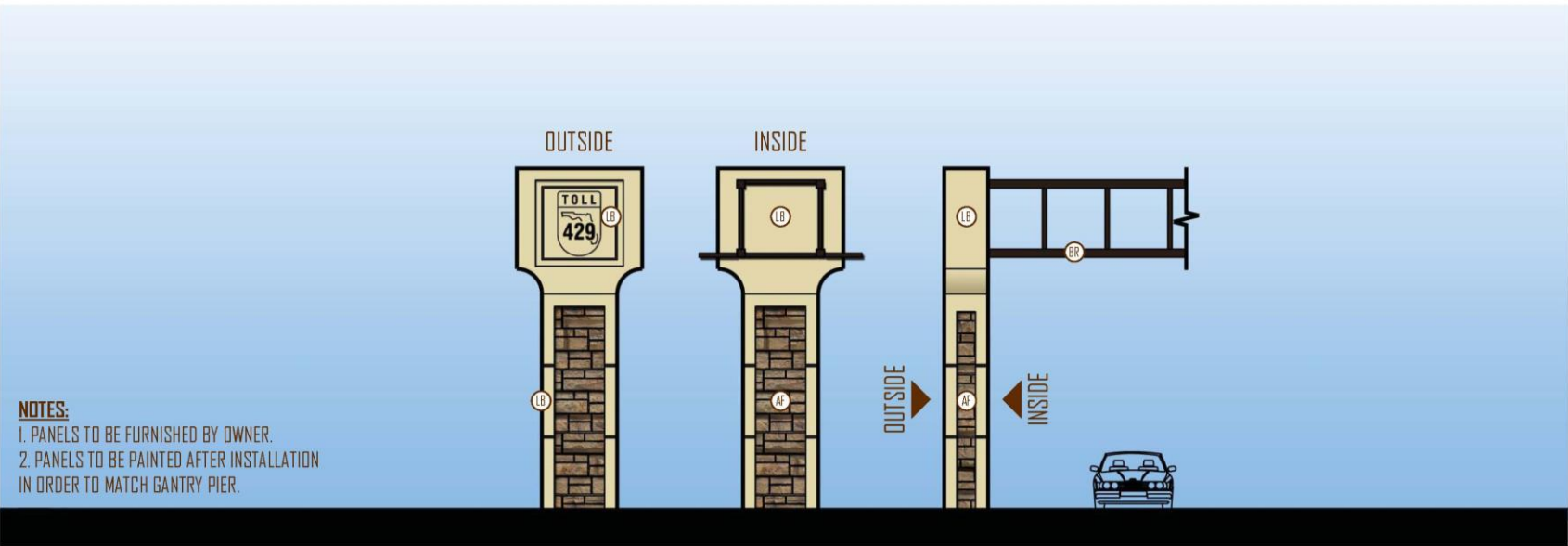
⑪ LIGHT BROWN (FED. COLOR #33690)
FINISH: SMOOTH / LIGHT SANDBLAST

⑫ DARK BROWN (FED. COLOR #33446)
FINISH: SMOOTH / LIGHT SANDBLAST

⑬ DARK GREEN (FED. COLOR #34227)

⑭ DARK BRONZE (FED. COLOR #20062)

NOTES: ALL COLORS ARE FEDERAL STANDARD 595 (7/1994) COLORS OR SHERWIN WILLIAMS (SW) COLORS.



TOLL GANTRY NOT TO SCALE

For More Information:

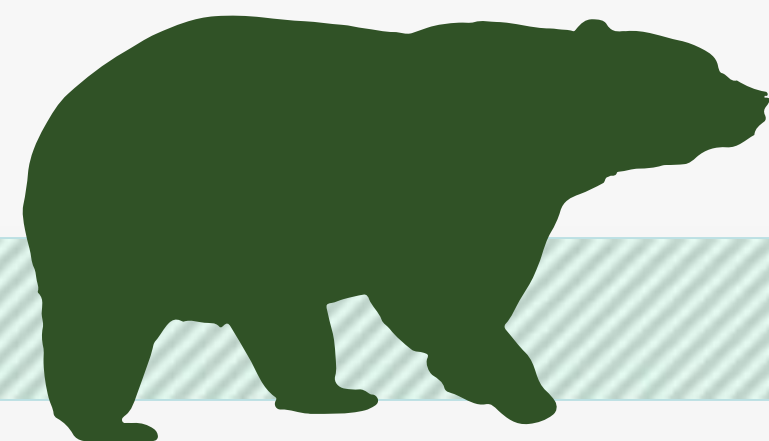
Mary Brooks

Public Involvement Coordinator

C: 407-694-5505

E: Info@wekivaparkway.com

W: www.wekivaparkway.com



WEKIVA PARKWAY
Completing Central Florida's Beltway

FDOT **CENTRAL FLORIDA EXPRESSWAY AUTHORITY**

HOME **FOOT SECTIONS** **CFX SECTIONS** **SECTIONS BY COUNTY** **PROJECT HISTORY** **FAQ** **CONTACT US**

WELCOME

On behalf of the Florida Department of Transportation and the Central Florida Expressway Authority (CFE), formerly the Orlando-Orange County Expressway Authority, thank you for your interest in the Wekiva Parkway design and construction projects. The Wekiva Parkway (State Road 429) is a cooperative effort between these agencies and the Florida's Turnpike Enterprise.

The Wekiva Parkway (SR 429) would connect to SR 417, completing the beltway around northwest metropolitan Orlando. This estimated \$1.8 billion project includes \$800 million of non-toll road improvements including:

- Widening seven (7) miles of SR 405 in Lake and Seminole Counties
- Rebuilding the US 441/SR 405 interchange in Mount Dora
- Shifting the CR 406A connection to SR 405 so wildlife can move more safely between habitats

[Click here to view the overall Project Schedule.](#) Please understand schedules are subject to change due to a host of variables.

WEKIVA PARKWAY PROJECT SECTION MAP

Click on a Section Number for Project Details.

FOOT/TPN SECTION
*Indicates Design Build

CFX SECTIONS

LATEST NEWS

Click on text for details

June 2014
Wekiva Parkway P&G Study Wins 2014 Engineering Excellence Award

June 2014
Seminole County Commissioners Receive Update on Wekiva Parkway

May 2014
Find Out Section Statuses in Updated Project Fact Sheet

May 2014
FDOT Schedules Public Meeting for Sections 2A & 2B on June 24, 2014

May 2014
Check Out the Latest Section 4A & 4B Construction Photos

April 2014
More Than 220 Attend FDOT Public Meeting on Sections 5 & 6

April 2014
FDOT Section 2A Reaches 60% Design Plans

April 2014
Check Out a Section 6 River Float Through Video

PUBLIC MEETING - FDOT Schedules Sections 2A & 2B Meeting

PROJECT DOCUMENTS

PRESENTATIONS

PRESS RELEASES

All News

twitter

facebook